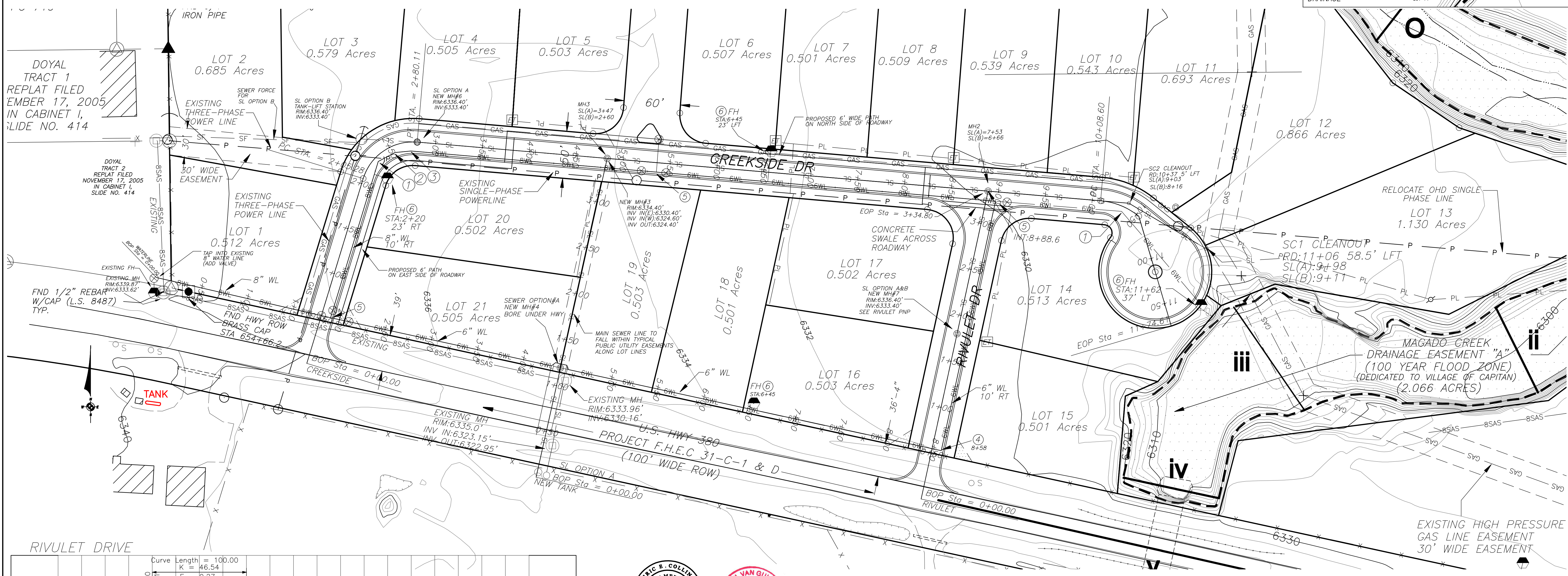
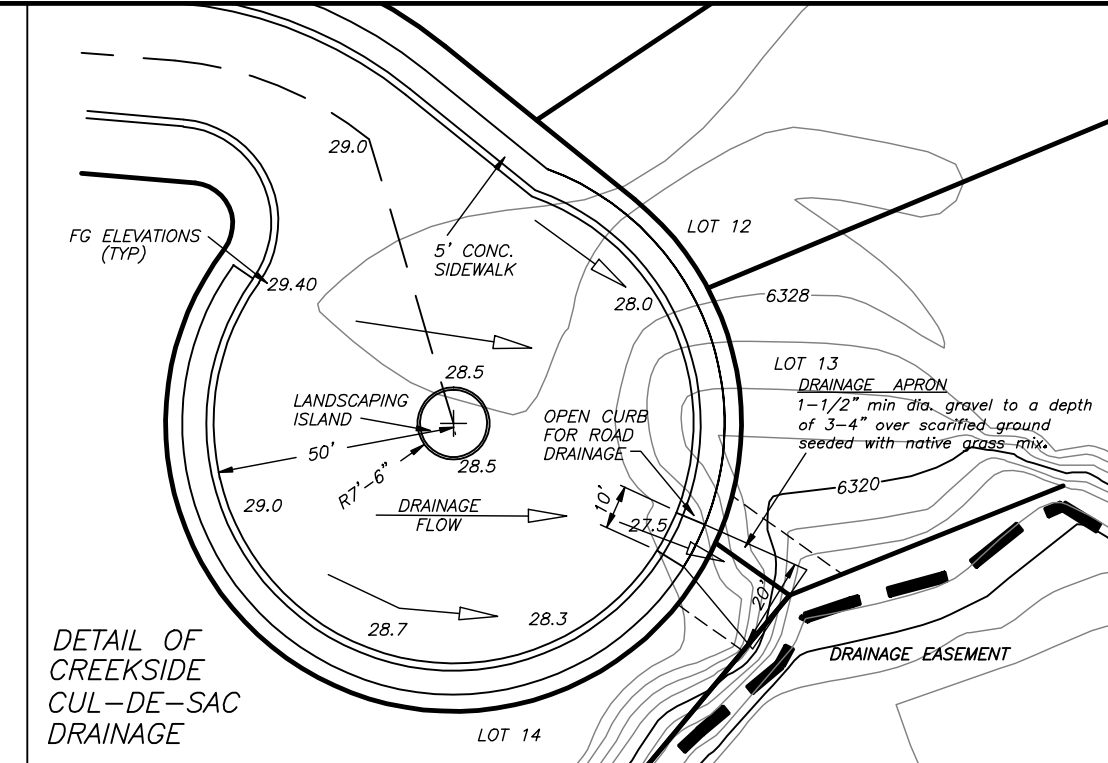
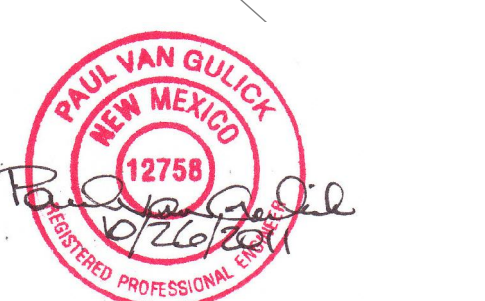


**RIVULET DRIVE PLAN AND PROFILE
AND UTILITY PLAN
CAPITAN TRADING POST
A TRACT OF LAND WITHIN THE N/2 OF SECTION 10,
TOWNSHIP 9 SOUTH, RANGE 14 EAST, N.M.P.M., VILLAGE
OF CAPITAN LINCOLN COUNTY, NEW MEXICO**

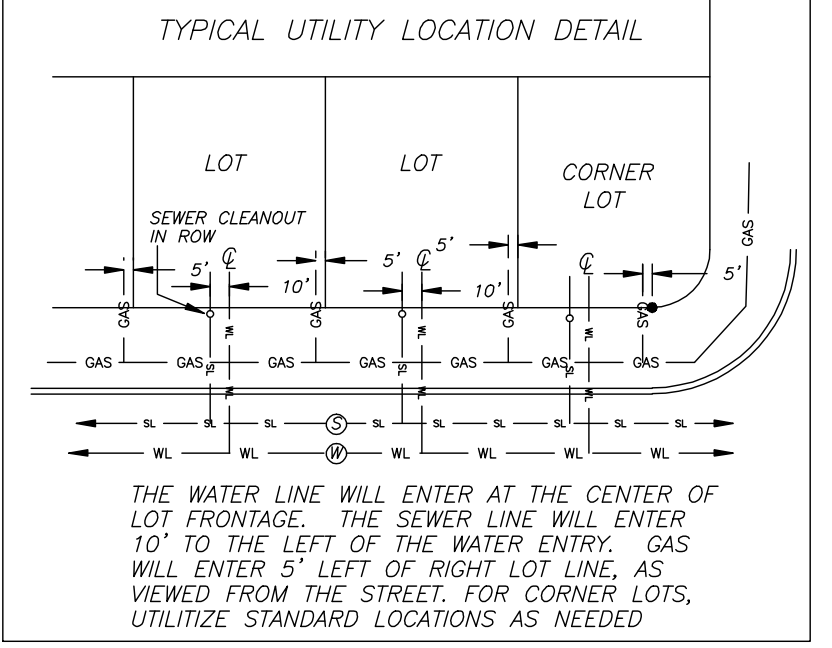
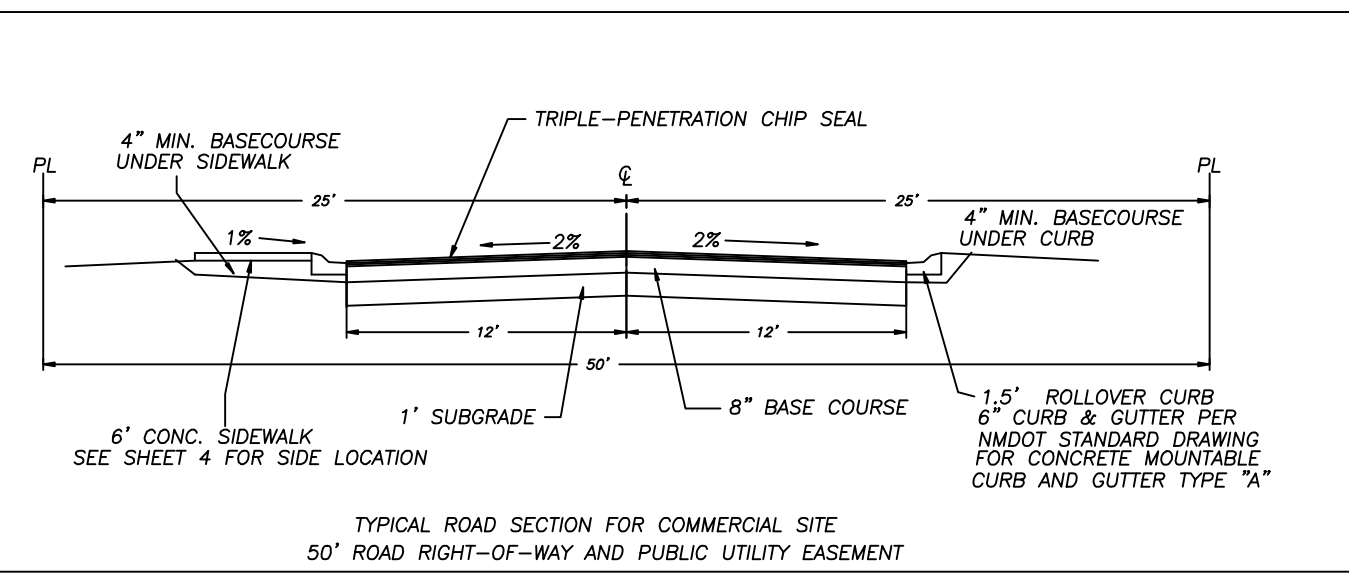
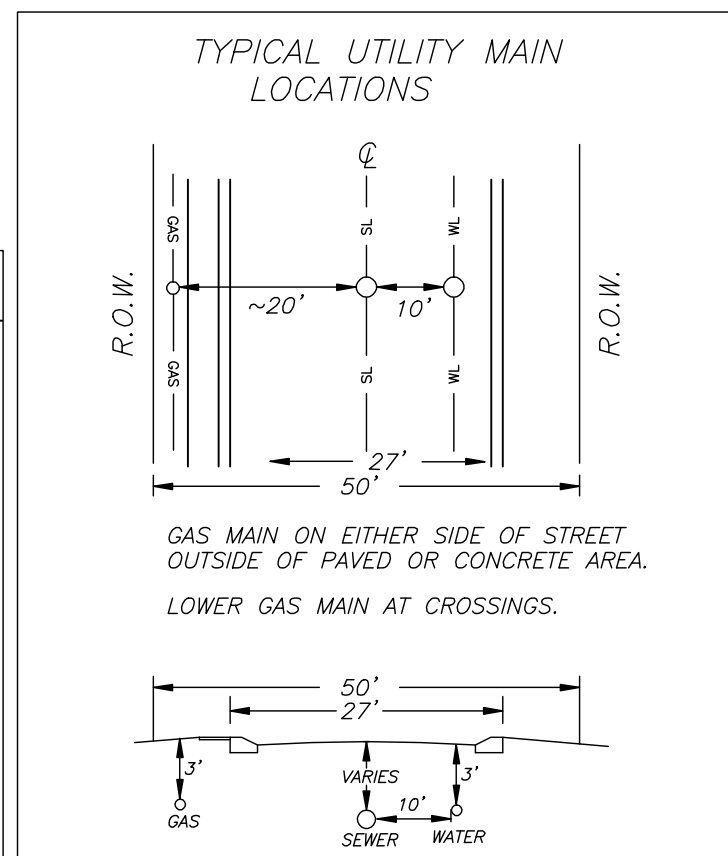


RIVULET DRIVE

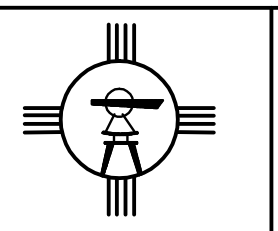
Station	Curve	Length	Curve	Length
6340	Curve K=46.54 E=0.27	100.00		
6335	VPC STA = 0+50.00 VPC ELV = 6334.21			
6330	VPI STA = 1+00.00 VPI ELV = 6332.50			
6325	VPT STA = 1+450.00 VPT ELV = 6331.87			
6320				



- UTILITY LEGEND**
- ELECTRIC TRANSFORMER
 - SEWER MANHOLE
 - FIRE HYDRANT
 - WATER VALVE
 - 8" WATER LINE
 - 6" WATER LINE
 - 8" SEWER LINE
 - EXISTING OHD POWER LINE
 - NEW POWERLINE(UDG & OHD)



BENCHMARK
ENGINEERING SURVEYING
PO BOX 1281 RUIDOSO DOWNS, NM 88346
(575) 378-4254



D.T. COLLINS & ASSOCIATES P.C.
SURVEYING, MAPPING
1042 MECHEM DR. 575-258-5272
PLS NO. 18077
RUIDOSO, LINCOLN COUNTY, NEW MEXICO

SCALE: 1"=100'
DATE: 10-27-11
DRAWN BY: EEC
CHECKED BY: PVG
JOB NO: 10-208
SHEET 6 OF 9