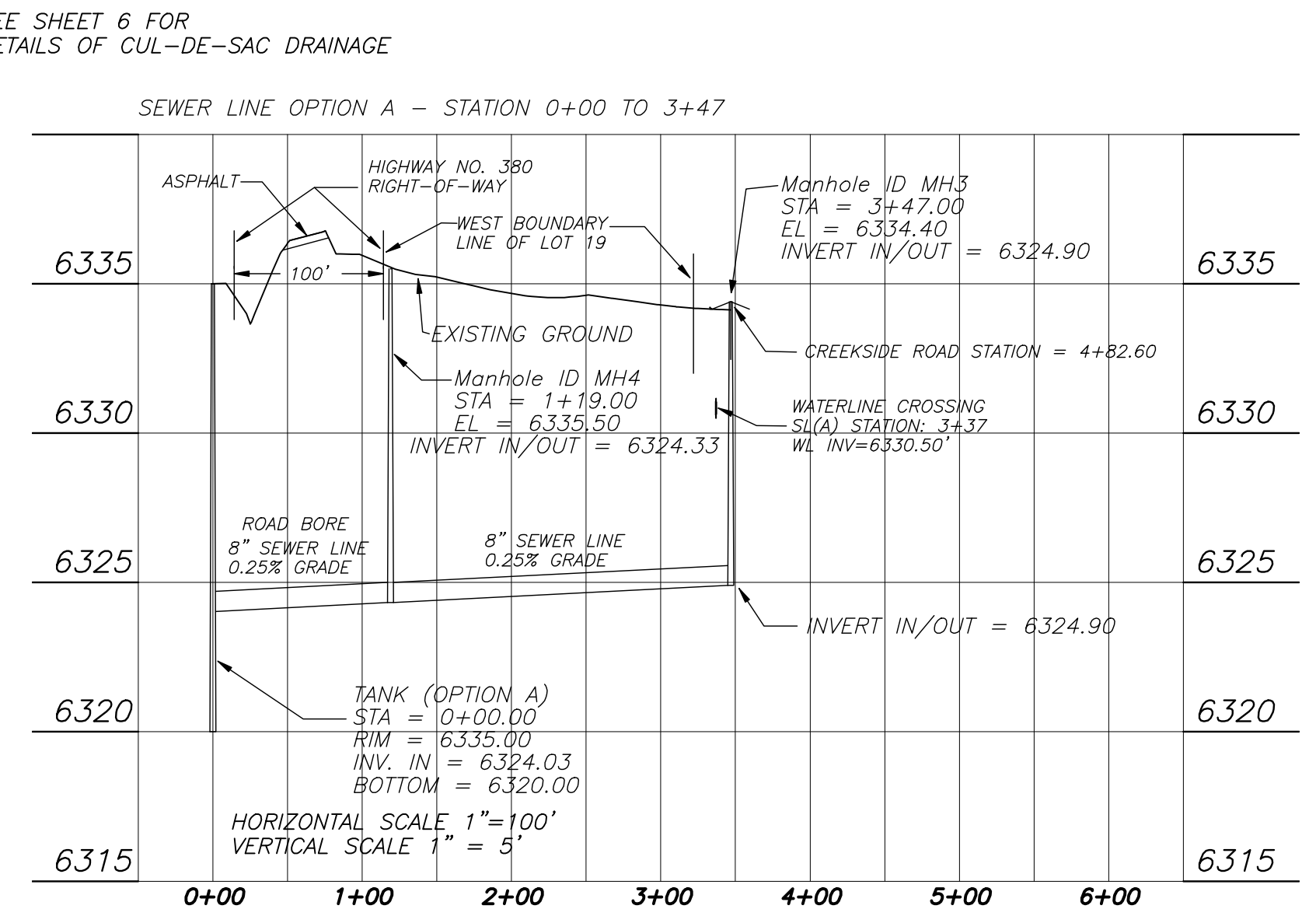
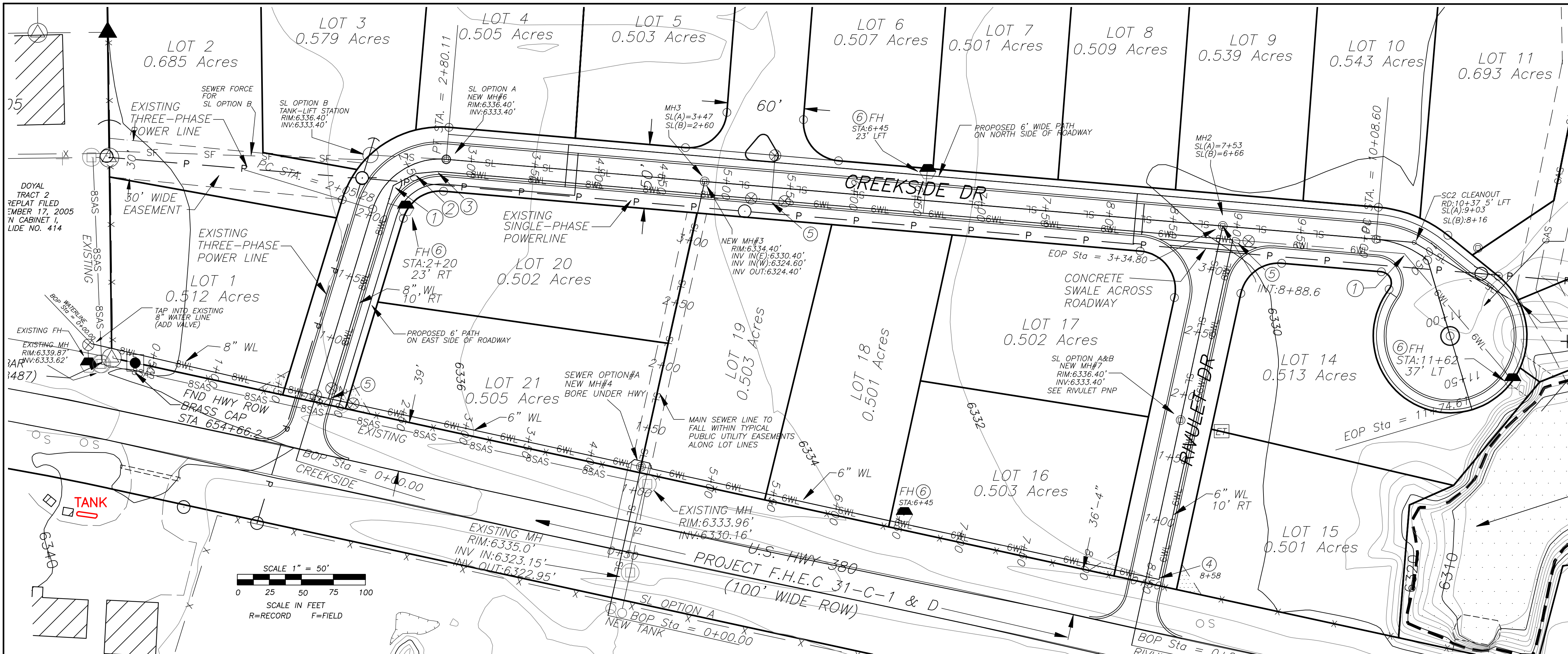
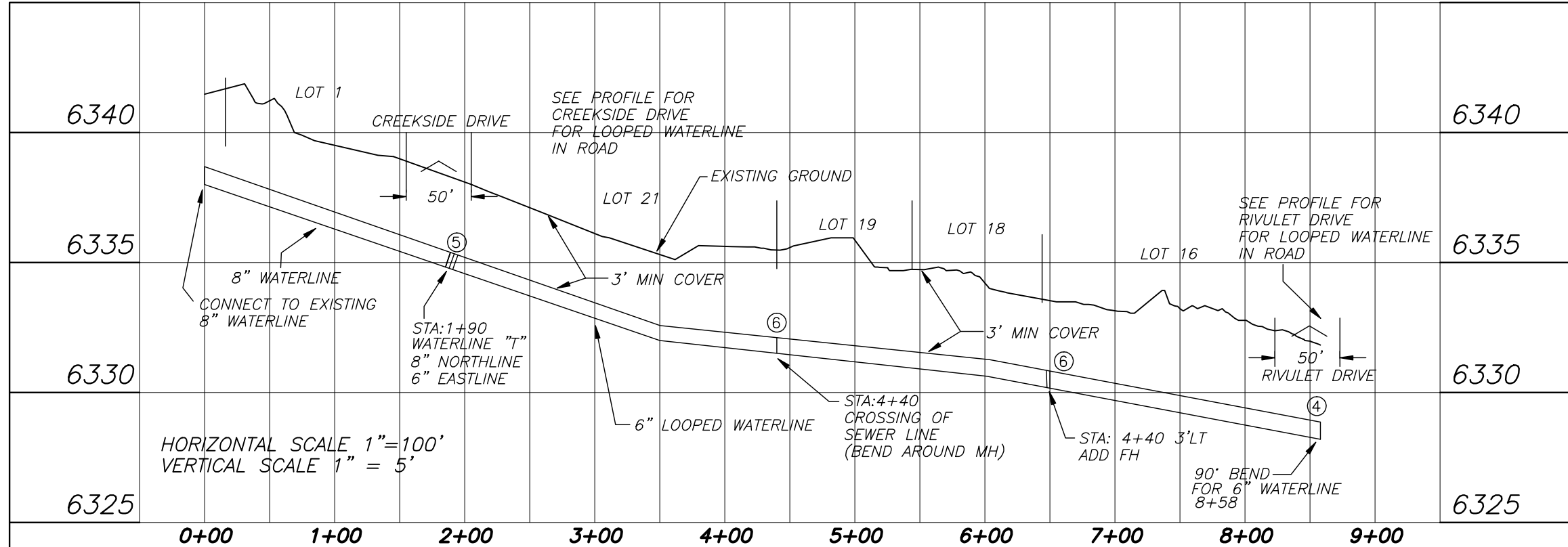


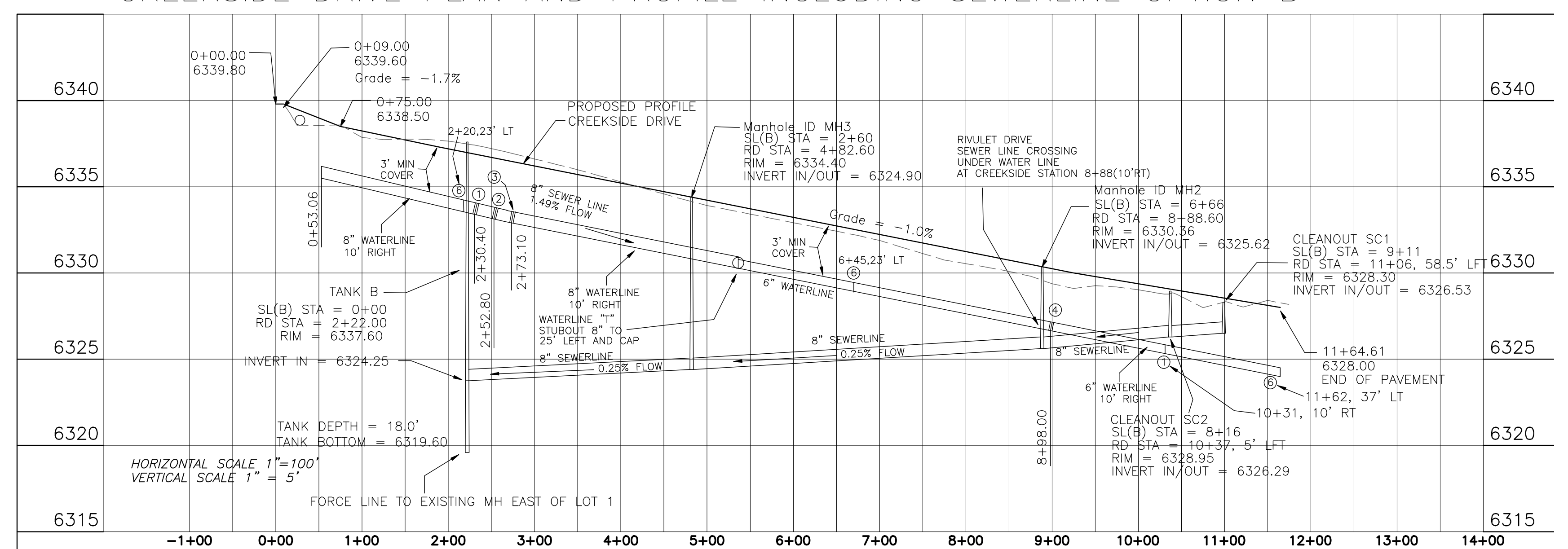
**CAPTAN TRADING POST
CREEKSIDE DRIVE PLAN AND PROFILE
SEWER AND WATER PLAN
A TRACT OF LAND WITHIN THE N/2 OF SECTION 10,
TOWNSHIP 9 SOUTH, RANGE 14 EAST, N.M.P.M., VILLAGE
OF CAPTAN LINCOLN COUNTY, NEW MEXICO**



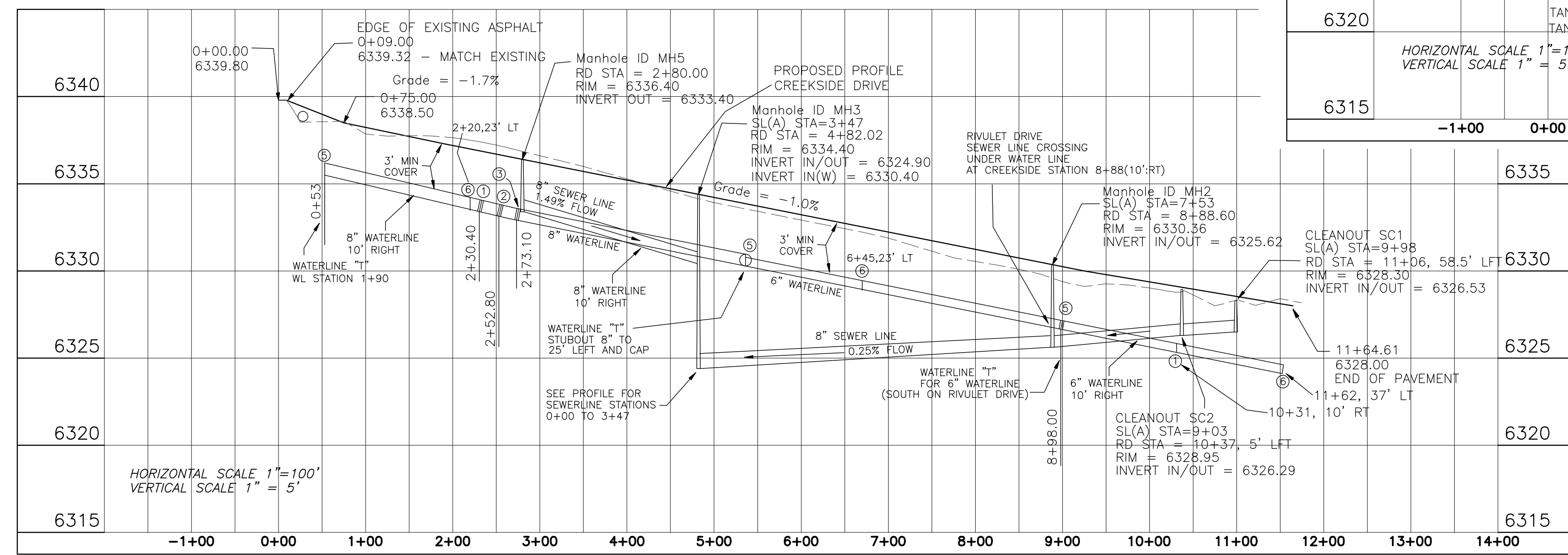
WATERLINE PROFILE STA: 0+00 TO 8+58



CREEKSIDE DRIVE PLAN AND PROFILE INCLUDING SEWERLINE OPTION B



CREEKSIDE DRIVE PLAN AND PROFILE INCLUDING SEWERLINE OPTION A



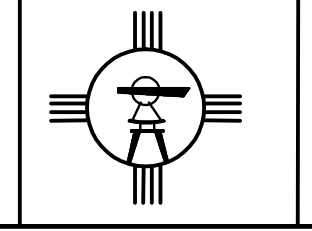
- UTILITY LEGEND**
- ⊕ ELECTRIC TRANSFORMER
 - ⊙ SEWER MANHOLE
 - ⊙ FIRE HYDRANT
 - ⊙ WATER VALVE
 - BWL — 8" WATER LINE
 - GWL — 6" WATER LINE
 - BSAS — 8" SEWER LINE
 - P — EXISTING OHD POWER LINE
 - PL — NEW POWERLINE(UDG & OHD)

- WATER LINE LEGEND**
- ① 45° BEND
 - ② 22.5° BEND
 - ③ 11.25° BEND
 - ④ 90° BEND
 - ⑤ WATERLINE "T"
 - ⑥ FIRE HYDRANT ASSEMBLY

- NOTES**
- THESE CONSTRUCTION DRAWINGS SHOW PROPOSED UTILITY LOCATIONS BASED ON THE TYPICAL UTILITY MAIN LOCATIONS EXHIBIT IN THE FINAL SUBMITTAL. LOCATIONS MAY CHANGE BASED ON COORDINATION BETWEEN SEPARATE UTILITY COMPANIES. ASBUILTS OF CONSTRUCTED UTILITIES ARE REQUIRED.
 - EACH LOT WILL BE SERVED WITH:
 - WATER
 - SEWER
 - ELECTRIC
 - NATURAL GAS
 - PHONE
 - MAINTENANCE OF OPTION B SEWER LIFT STATION WILL BECOME THE RESPONSIBILITY OF THE VILLAGE OF CAPTAN AFTER THE ONE-YEAR MAINTENANCE/WEAR PERIOD.
 - ALL UTILITIES WILL BE CONSTRUCTED WITHIN PLANNED UTILITY EASEMENTS.
 - SEPARATION OF WATER AND SEWER LINES:
 - PARALLEL CONSTRUCTION: THE HORIZONTAL DISTANCE BETWEEN PRESSURE WATER MAINS AND SEWER LINES SHALL BE AT LEAST 10 FEET.
 - PERPENDICULAR CONSTRUCTION (CROSSING): PRESSURE WATER LINES SHALL BE AT LEAST 12 INCHES ABOVE SANITARY SEWER LINES WHERE LINES MUST CROSS.
 - INDIVIDUAL SERVICE STUBOUTS FOR WATER, GAS AND SEWER WILL BE CONSTRUCTED BASED ON THE TYPICAL UTILITY LOCATION DETAIL EXHIBIT SHEET 6 OF THIS SUBMITTAL. THESE INDIVIDUAL STUBOUTS ARE NOT SHOWN ON THE MAIN UTILITY DRAWING HEREIN.
 - PARKING IS PROHIBITED IN THE RIGHT-OF-WAY.



BENCHMARK
ENGINEERING & SURVEYING
PO BOX 1281 RUIDOSO DOWNS, NM 88346
(575) 378-4254



D.T. COLLINS & ASSOCIATES P.C.
SURVEYING, MAPPING
1042 MECHEM DR. 575-258-5272
PLS NO. 18077
RUIDOSO, LINCOLN COUNTY, NEW MEXICO

SCALE: 1"=100'
DATE: 10-27-11
DRAWN BY: EEC
CHECKED BY: PVG
JOB NO.: 10-708
SHEET 5 OF 9